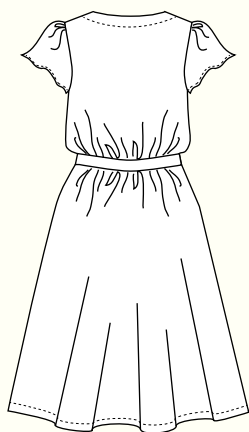


## YALETOWN DRESS &amp; BLOUSE / 2 VIEWS



A - BACK

**DESCRIPTION:** Loose-fitting, unlined wrap-style dress and blouse has a crossover neckline, elastic waistline covered with a fabric tie belt and short flutter sleeves. Optional button & loop closure at the front neckline. View A is a knee length dress with inseam pockets. View B is a hip-length blouse.

**RECOMMENDED FABRICS:** Lightweight woven fabrics such as cotton voile or lawn, rayon challis, silk charmeuse or crepe. Choose a fabric with drape for best results. Allow extra fabric to match plaids, stripes or one-way designs.

**NOTIONS:** Thread, one yard of  $\frac{1}{4}$ " wide elastic, one yard of fusible interfacing. Optional: one  $\frac{3}{8}$ " button.

## BODY MEASUREMENTS (inches\*)

	0	2	4	6	8	10	12	14	16
BUST	30	31	32	33	34½	36	37½	39	41
WAIST	24	25	26	27	28½	30	31½	33	35
HIP	36	37	38	39	40½	42	43½	45	47

## FABRIC REQUIREMENTS (yards\*)

## VIEW A

44/45"	4½	4½	4½	4½	4¾	4¾	4¾	4¾	4¾
59/60"	3¾	3¾	3¾	3¾	3¾	4	4	4	4

## VIEW B

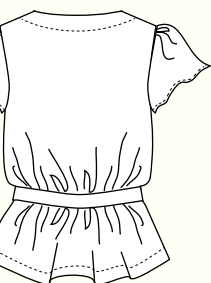
44/45"	2¾	2¾	2¾	2¾	2¾	2¾	2¾	2¾	2¾
59/60"	2	2	2	2	2	2¼	2¼	2¼	2¼

## FINISHED MEASUREMENTS (inches\*)

	0	2	4	6	8	10	12	14	16
BUST	34	35	36	37	38½	40	41½	43	45
WAIST	22	23	24	25	26½	28	29½	31	33
HIP	41	42	43	44	45½	47	48½	50	52
LENGTH A	41½	41¾	42	42¼	42½	42¾	43	43¾	43½
LENGTH B	23½	23¾	24	24¼	24½	24¾	25	25¼	25½

\*Metric conversions online at [sewaholicpatterns.com/yaletown-dress-and-blouse](http://sewaholicpatterns.com/yaletown-dress-and-blouse)

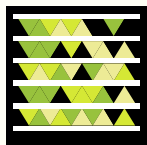
\*\*Waist is elastic and will stretch



B - BACK

## SNAP ME!

View images of  
the real dress and  
blouse online



Get the free  
mobile app at  
<http://gettag.mobi>